

THE ROAD LESS TRAVELED

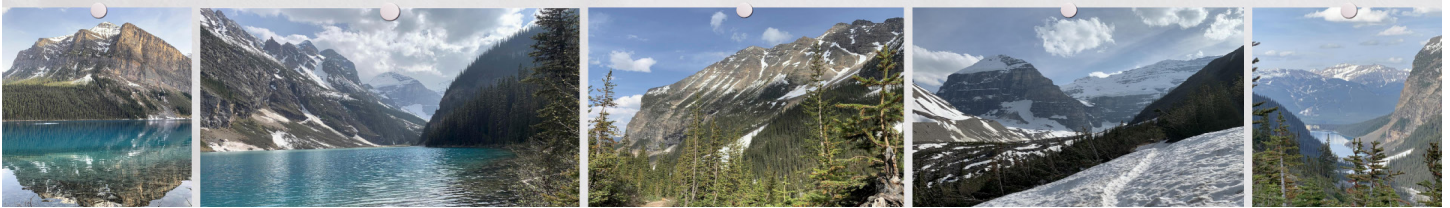
Matthew 7:13 – 14

September 24, 2023

Scott Ridout, Guest Speaker

Scott Ridout served as a pastor for 27 years before becoming President of Converge in 2014. A year ago Scott transitioned to join the leadership team at The Timothy Initiative, an organization which starts church planting movements among the least reached people of the world. Scott and his wife Lisa have been married for 35 years, have three grown kids and live in Raleigh, North Carolina.

MESSAGE NOTES



(Pictures from Banff Canada)

The path you take matters.

Enter through the narrow gate. For wide is the gate and broad is the road that leads to destruction, and many enter through it. But small is the gate and narrow the road that leads to life, and only a few find it. – Matthew 7:13 – 14 (NIV)

See, I have set before you today life and prosperity, death and destruction. – Deuteronomy 30:15 (NIV)

Choose for yourselves this day whom you will serve... but as for me and my household, we will serve the Lord. – Joshua 24:15 (NIV)

How long will you waver between two opinions? If the Lord is God, follow Him; but if Baal is god, follow him. – 1 Kings 18:21 (NIV)

Principle of the Path

- Path Principle Part 1: Everyone is on a path.
- Path Principle Part 2: Decisions determine direction.
- Path Principle Part 3: Direction, not intention, determines destination.



There's a difference in the Bible with being unclear and being unpopular.

There's a way that appears to be right, but in the end it leads to death. — Proverbs 14:12 (NIV)

For the wages of sin is death, but the gift of God is eternal life in Christ Jesus our Lord. — Romans 6:23 (NIV)

Where you wind up depends on which road you take!

- Path Principle Part 4: You can change your path.